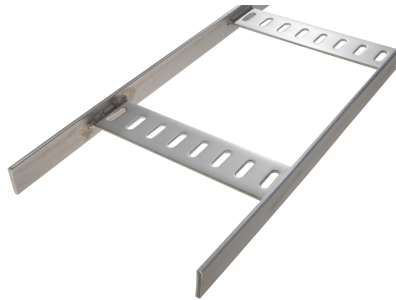


26030239 - SLB ZKRG 30.75 ME Marine ladder L3m



Product data

| | |
|------------------------|-------------------------------------|
| Product code: | 26030239 |
| Brand: | Niedax Group |
| Series: | Gouda Marine ladders |
| Type: | SLB |
| EAN Code: | 08719972003712 |
| Technical description: | SLB ZKRG 30.75 ME Marine ladder L3m |
| ETIM class: | EC000854 - Cable ladder |

Technical data

| | |
|---------------------------------|--------------|
| Colour: | Red |
| Width: | 75 |
| Height: | 30 |
| RAL-number: | - |
| Surface protection: | Red-leaded |
| Weight: | 2.912 |
| Type of rung: | Flat profile |
| Side perforation: | No |
| Material quality: | Other |
| Length: | 3000 |
| Material: | Steel |
| Usable cross section: | - |
| Type of side joist: | Flat profile |
| Suitable for circuit integrity: | No |
| Rung centre spacing: | 250 |

| | |
|---|-----------|
| Fixation rung: | Welded |
| Working length: | 3000 |
| Vertical cable ladder: | - |
| Operating temperature: | -20 - 120 |
| Possible support spacing: | - - 3 |
| Safe working load according to IEC 61537 with support spacing 7.0 m: | - |
| Safe working load according to IEC 61537 with support spacing 10.0 m: | - |
| Safe working load according to IEC 61537 with support spacing 11.0 m: | - |
| Safe working load according to IEC 61537 with support spacing 12.0 m: | - |
| Safe working load according to IEC 61537 with support spacing 4.0 m: | - |
| Safe working load according to IEC 61537 with support spacing 5.0 m: | - |
| Safe working load according to IEC 61537 with support spacing 6.0 m: | - |
| Safe working load according to IEC 61537 with support spacing 8.0 m: | - |
| Safe working load according to IEC 61537 with support spacing 9.0 m: | - |