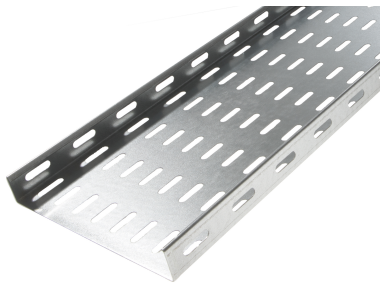


31081153 - Tray GPR 28.50 HDG Cable tray L3m



Product data

Product code:	31081153
Brand:	Niedax Group
Series:	Gouda Cable duct
Type:	Tray
EAN Code:	08719972009073
Technical description:	Tray GPR 28.50 HDG Cable tray L3m
ETIM class:	EC000047 - Cable tray

Technical data

Safe working load according to IEC 61537 with support spacing 0.5 m:	-
Safe working load according to IEC 61537 with support spacing 1.5 m:	410
Safe working load according to IEC 61537 with support spacing 2.0 m:	250
Safe working load according to IEC 61537 with support spacing 3.0 m:	50
Safe working load according to IEC 61537 with support spacing 4.0 m:	-
Safe working load according to IEC 61537 with support spacing 6.0 m:	-
Safe working load according to IEC 61537 with support spacing 7.0 m:	-
Safe working load according to IEC 61537 with support spacing 8.0 m:	-
Safe working load according to IEC 61537 with support spacing 10.0 m:	-

Safe working load according to IEC 61537 with support spacing 9.0 m:	-
Possible support spacing:	- - 3
Safe working load according to IEC 61537 with support spacing 1.0 m:	600
Safe working load according to IEC 61537 with support spacing 2.5 m:	160
Safe working load according to IEC 61537 with support spacing 5.0 m:	-
Safe working load according to IEC 61537 with support spacing 11.0 m:	-
Safe working load according to IEC 61537 with support spacing 12.0 m:	-
Width:	50
Model:	Without connector
Height:	28
RAL-number:	-
Surface protection:	Hot-dip galvanised
Weight:	-
Material thickness:	1.5
Side perforation:	Yes
Material quality:	Other
Length:	3000
Material:	Steel
Bottom perforation:	Yes
Usable cross section:	1058
NATO-mounting holes:	No
Suitable for circuit integrity:	No
With cover:	No
Working length:	3000
Working temperature:	-20 - 120
Type of connection:	Screwed