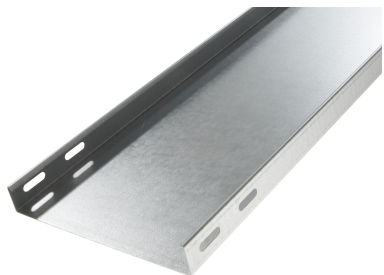


31105148 - Tray ZPR 28.200 C Cable tray L3m



Product data

| | |
|------------------------|----------------------------------|
| Product code: | 31105148 |
| Brand: | Niedax Group |
| Series: | Gouda Cable duct |
| Type: | Tray |
| EAN Code: | 08719972009653 |
| Technical description: | Tray ZPR 28.200 C Cable tray L3m |
| ETIM class: | EC000047 - Cable tray |

Technical data

| | |
|-----------------------|------------------------------------|
| Colour: | Other |
| Width: | 200 |
| Model: | Without connector |
| Height: | 28 |
| RAL-number: | - |
| Surface protection: | Continuously galvanised and coated |
| Weight: | - |
| Material thickness: | 1 |
| Side perforation: | No |
| Material quality: | Other |
| Length: | 3000 |
| Material: | Steel |
| Bottom perforation: | No |
| Usable cross section: | 4554 |
| NATO-mounting holes: | No |

| | |
|---|-----------|
| Suitable for circuit integrity: | No |
| With cover: | No |
| Operating temperature: | -20 - 120 |
| Type of connector: | Screwed |
| Working length: | 3000 |
| Possible support spacing: | - - 3 |
| Safe working load according to IEC 61537 with support spacing 0.5 m: | - |
| Safe working load according to IEC 61537 with support spacing 1.0 m: | 600 |
| Safe working load according to IEC 61537 with support spacing 1.5 m: | 410 |
| Safe working load according to IEC 61537 with support spacing 2.5 m: | 160 |
| Safe working load according to IEC 61537 with support spacing 3.0 m: | 50 |
| Safe working load according to IEC 61537 with support spacing 7.0 m: | - |
| Safe working load according to IEC 61537 with support spacing 10.0 m: | - |
| Safe working load according to IEC 61537 with support spacing 9.0 m: | - |
| Safe working load according to IEC 61537 with support spacing 11.0 m: | - |
| Safe working load according to IEC 61537 with support spacing 2.0 m: | 250 |
| Safe working load according to IEC 61537 with support spacing 4.0 m: | - |
| Safe working load according to IEC 61537 with support spacing 5.0 m: | - |
| Safe working load according to IEC 61537 with support spacing 6.0 m: | - |
| Safe working load according to IEC 61537 with support spacing 8.0 m: | - |
| Safe working load according to IEC 61537 with support spacing 12.0 m: | - |