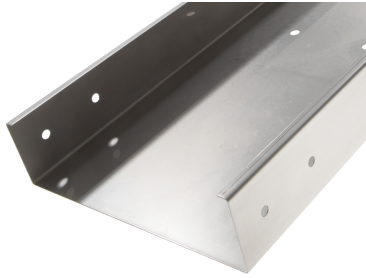


51002146 - Lock OK3 60.140 SS316 Cable tray L3m



Product data

Product code:	51002146
Brand:	Niedax Group
Series:	Gouda Cable duct
Type:	Lock
EAN Code:	08719972070752
Technical description:	Lock OK3 60.140 SS316 Cable tray L3m
ETIM class:	EC000047 - Cable tray

Technical data

Width:	140
Model:	Without connector
Height:	60
Type of connection:	Screwed
RAL-number:	-
Surface protection:	Untreated
Weight:	-
Material thickness:	1
Side perforation:	No
Material quality:	Stainless steel 316 (V4A)
Length:	3000
Working temperature:	-20 - 120
Material:	Stainless steel
Bottom perforation:	No
Usable cross section:	-
NATO-mounting holes:	No
Working length:	3000

Suitable for circuit integrity:	No
With cover:	No
Possible support spacing:	- - 3
Safe working load according to IEC 61537 with support spacing 0.5 m:	-
Safe working load according to IEC 61537 with support spacing 1.0 m:	-
Safe working load according to IEC 61537 with support spacing 1.5 m:	-
Safe working load according to IEC 61537 with support spacing 2.0 m:	-
Safe working load according to IEC 61537 with support spacing 2.5 m:	-
Safe working load according to IEC 61537 with support spacing 3.0 m:	460
Safe working load according to IEC 61537 with support spacing 4.0 m:	-
Safe working load according to IEC 61537 with support spacing 5.0 m:	-
Safe working load according to IEC 61537 with support spacing 6.0 m:	-
Safe working load according to IEC 61537 with support spacing 7.0 m:	-
Safe working load according to IEC 61537 with support spacing 8.0 m:	-
Safe working load according to IEC 61537 with support spacing 10.0 m:	-
Safe working load according to IEC 61537 with support spacing 9.0 m:	-
Safe working load according to IEC 61537 with support spacing 11.0 m:	-
Safe working load according to IEC 61537 with support spacing 12.0 m:	-