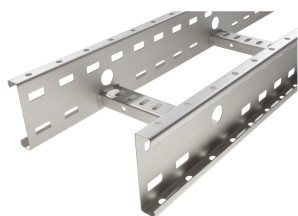


71003236 - Crafty MF 100.300 SS316 Cable Ladder c.t.c.300 L3m



Product data

Product code:	71003236
Brand:	Niedax Group
Series:	Gouda Cable ladder
Type:	Crafty
EAN Code:	08719972115903
Technical description:	Crafty MF 100.300 SS316 Cable Ladder c.t.c.300 L3m
ETIM class:	EC000854 - Cable ladder

Technical data

Width:	300
Height:	100
RAL-number:	-
Surface protection:	Other
Weight:	-
Type of rung:	Perforated profile
Side perforation:	Yes
Material quality:	Stainless steel 316 (1.4401)
Length:	3000
Material:	Stainless steel
Usable cross section:	-
Type of side joist:	Profile (open)
Suitable for circuit integrity:	No
Rung centre spacing:	300

Fixation rung:	Welded
Operating temperature:	-20 - 120
Vertical cable ladder:	-
Working length:	3000
Safe working load according to IEC 61537 with support spacing 0.5 m:	-
Safe working load according to IEC 61537 with support spacing 1.5 m:	-
Safe working load according to IEC 61537 with support spacing 2.0 m:	-
Safe working load according to IEC 61537 with support spacing 3.0 m:	2200
Safe working load according to IEC 61537 with support spacing 4.0 m:	650
Safe working load according to IEC 61537 with support spacing 9.0 m:	-
Safe working load according to IEC 61537 with support spacing 11.0 m:	-
Safe working load according to IEC 61537 with support spacing 12.0 m:	-
Possible support spacing:	- - 4.5
Safe working load according to IEC 61537 with support spacing 1.0 m:	-
Safe working load according to IEC 61537 with support spacing 2.5 m:	-
Safe working load according to IEC 61537 with support spacing 5.0 m:	-
Safe working load according to IEC 61537 with support spacing 6.0 m:	-
Safe working load according to IEC 61537 with support spacing 7.0 m:	-
Safe working load according to IEC 61537 with support spacing 8.0 m:	-
Safe working load according to IEC 61537 with support spacing 10.0 m:	-